

L'HOMME ANIMAL

SCULPTURES AND PAINTINGS
BY ROLAND ROURE



1. *La conquête de l'ouest*, 2015 © Louise-Marie Cumont

EXHIBITION FROM DECEMBER 3, 2016 TO JANUARY 7, 2017

OPENING OF THE EXHIBITION ON DECEMBER 3, 2016
FROM 6 PM TO 8.30 PM



From December 3rd, 2016 to January 7th, 2017, FLAIR Galerie presents the work of the sculptor Roland Roure. Convinced that man is an animal, he manipulates raw materials and words with equal malice, the odd beast lurking where no one expects it. This ensemble forms an open alphabet developed during 40 years by Roland Roure.

Roure is a personage with real spirituality. He spews three-dimensional poetry, recycles the consumer society's relegated objects, bestows nobility to a length of wire, breathes new life into old tin cans, and brightens it all up with a dab of paint. Tampered with by magic fingers, these piles of impoverished materials are reborn and outperform as an elegant black ballet dancer, a crab or a cat in full control of its prey. Imagination reigns and the maladroit master does the rest. Carnavalesque! This plastic expression springing forth from folk art, made with next to nothing, naïve as a homemade toy and precious as a Charles Matton box, is indispensable in an ailing art market overdosed on super productions.

Roland is a loner, at the polar opposite of the madness, situated amidst the calm of his meridional landscape developing a work that juggles his world, inventing non-codes, cutting, forming, amplifying his dreams in a multitude of second hand tinsplate, made fresh daily! Forty years of work, of experimentation virtually "hands off".

Roland Roure has created his own universe juxtaposed to ours, a benevolent alphabet open to the infinite, no limit, no "Z", no full stop. This singular work rolls out its imaginary personal path and will touch visitors by its sincerity and the inspired ingenuity of creatures born from "nearly nothing".

Cyrille Putman, 2016

Translation by Ilsa Carter and Pierre Guglielmina

All it would take would be a typo for Roure to become Roue (wheel) (Columbus recommended to avoid any play on words about a family name, particularly in an introduction, it upsets the person concerned, having borne the brunt of it since kindergarten).

Roue on Roure's tail (and I am holding on to it!) is more striking than the so-called design of Destiny in the palm of the hand, even for one who chooses to observe the instinctive line — therefore instructive — traced by the hand that draws.

Like a wire folded, bent, angled, rounded, corkscrewed, passing from one subject to the next, uncut (axle, spoke, felloes), which permits the finding or reinventing of an intelligible synthesis, a surprising one, as in writing — twisted old barbed wire closing off the thinking.

Not only with wire, but with re-used planchets cut out and assembled in an order that is his, scrap offset sheets cut with shears, poultry-yard feathers gathered for ornament and some fresh colors, vernacular, but applied his way, that is to say like nobody else, Roure produces animals, acrobats, weather vanes, a number of rudimentary machines, as much sculptures as paintings, but disguised as toys, and they move. Tour de force! The child sees himself in it. And so do the parents.

"Listen, says the father, here is something to buy yourself a nice little ambulance in plastic, remote-controlled, with ejection stretcher and siren ... But give me back the wooden dragonfly folding and unfolding its wings." Ambiguous toys? The artist and the artisan become estranged. One holds his own, the other is wary. No big words. We're in deep water. Considerable gap due to a simple and rare fact, verging on defiance: Roland Roure is not naïve.

Pierre Alechinsky, 1977

Translation by Ilsa Carter and Pierre Guglielmina

BIOGRAPHY OF ROLAND ROURE

Roland Roure was born in 1940. In 1974, his first sculptures were shown at Robert Delpire gallery in Paris. Defining himself as « a builder of ludic machines, putting into play noise, color, fireworks, wind and water », his sculptures revive an entire tradition of folk art. His subjects are tightrope walkers, mythological heroes, fishermen, but can also be reclining ladies reading, women with children or couples entwined. Made of fine sheet metal or wire, without assemblage or solder, the sculptures are set in motion by the slightest breath of air, revealing an infinitely poetical world. Roland Roure describes it as juggling childhood memories, along with pages from the illustrated dictionary Larousse and folk art, of course, the thing that moves him most.

For more than thirty years, important museums and institutions, as well as galleries, have shown Roland Roure — Musée des Arts décoratifs and Centre Pompidou in Paris, Museum of Modern Art in Aspen, Colorado, Musée d'Art Moderne in Liège, Belgium. Mirabilia Gallery in Lagorce (Ardèche) regularly shows his sculptures and paintings, maintaining a permanent collection of his work.

Roland Roure has also created sets for ballet and opera at the Théâtre du Chatelet, the Péniche Opéra and the Centre de recherche de l'Opéra de Paris.

RECENT EXHIBITIONS

2016 FLAIR Galerie, Arles

2016 L'Arc-Scène nationale, Le Creusot

2015 The Toy Museum-*Spielzeugmuseum*, Riehen, (Basel)

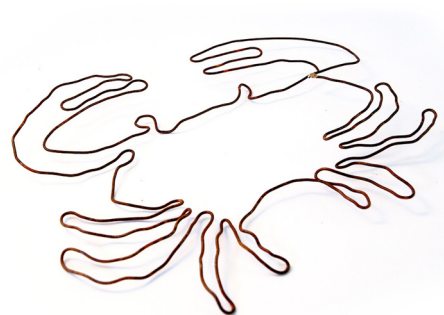
VISUALS FREE OF RIGHTS FOR THE PRESS

1. *La conquête de l'ouest*, 2015
Sculpture by Roland Roure
Wood, aluminium, wire,
acrylic paint
12 x 18 x 10 cm
© Louise-Marie Cumont



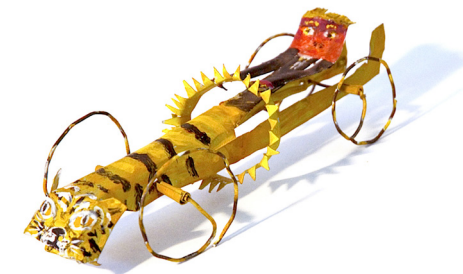
2. © Louise-Marie Cumont

2. *Oiseau*, 2016
Sculpture by Roland Roure
Aluminium, wire, acrylic paint
21 x 21 x 14 cm
© Louise-Marie Cumont



3. © Shakuntala

3. *Le Crabe*, 2015
Sculpture by Roland Roure
Wire
30 x 26 cm
© Shakuntala



4. © Shakuntala

4. *Le tigre dans le moteur*, 2015
Sculpture by Roland Roure
Aluminium, wire, acrylic paint
5 x 18,5 x 7 cm
© Shakuntala

On request at FLAIR Galerie

THE GALLERY

FLAIR Galerie, Art Gallery dedicated to animals, situated in the historic heart of the city of Arles, offers exhibitions of artists, a collection of contemporary art objects specially designed for the gallery, and a selection of art books and reviews.

FLAIR Galerie has recently opened an online store enabling to acquire a selection of artworks from the exhibitions at the gallery.

FLAIR Galerie is a member of the Arles Contemporain network. 

FLAIR GALERIE'S EXHIBITIONS

2016

Jeux, inks and watercolors by Lucio fanti

Zoom, photographs by Dolorès Marat

Dogland, illustrations by Lucy Marshall

Impatience, photographs by Jean-François Spricigo

2015

A special breed, paintings by Jenifer Corker, sculptures by Holy Smoke

All Friends, drawings and paintings by Baltasar Dürrbach

Tout Bêtement, photographs by Nicolas Guilbert, sculptures by Marie Christophe

Le loup et les sept chevreaux, illustrations by Christian Roux

Eden, photographs by Salvatore Puglia

Opening hours: Wednesday to Saturday, from 11 am to 1 pm and 3 pm to 6 pm, and by appointment.

11 rue de la Calade ■ 13200 Arles ■ 33 (0)9 80 59 01 06 ■ 33 (0)6 20 75 13 58 ■ contact@flairgalerie.com www.flairgalerie.com

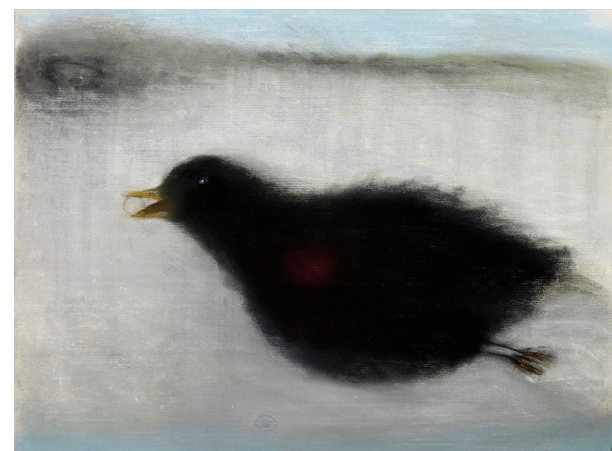
THE GALLERY WILL BE CLOSED FROM JANUARY 9 TO APRIL 7, 2017

NEXT EXHIBITION

MON PREMIER CERCLE

Paintings by Anouk Grinberg

From April 8 to June 23, 2017



© Anouk Grinberg